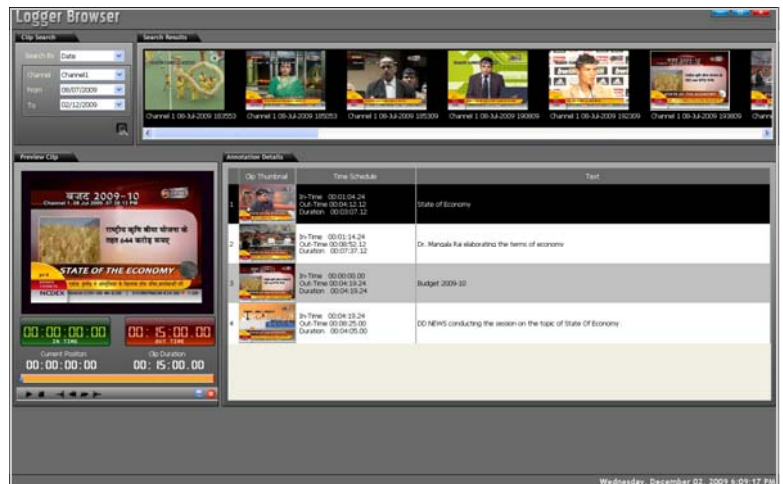


## Broadcast Transmission Logger

vLogger is a powerful broadcast and media application used by customers for recording, monitoring and archiving their broadcasted content. vLogger captures and stores your broadcast signal 24x7 to meet all your business needs. It allows the logged video to be viewed on any standard PC using a dedicated application or a web interface. All recordings are segmented and indexed with basic metadata attached automatically and is made available for remote browsing immediately.

vLogger encodes the live channel video feed and stores the digital video on the storage server. The video storage has redundancy levels by the provision of one hot pluggable spare drive and RAID3 (optional) implementation. The superior compression of Mpeg-4 standard used by the system, offers a wide range of encoding bit rates, and hence provides greater flexibility to achieve the best possible combination of video quality and storage.



### KEY FEATURES

- 24X7X365 days recording.
- Automatic indexing and segmentation of programs
- Web Streaming
- Flexible video and audio bit rates
- Date and Time stamping on clips
- MPEG 4 and Windows Media Video 9 Format Compatible
- Metadata management and inbuilt search engine to search clips based on metadata
- Remote viewing of logged content through GUI
- PAL/NTSC compatible
- Automatic clip creation based on user defined time spans.
- Interface to monitor multiple channels simultaneously.
- Recording as per the schedule
- CD/DVD archive option.
- Modular system to allow for multi channel network.

### APPLICATIONS

- Compliance Recording
- Video Capture & Ingesting
- Archiving
- Video Monitoring

### ALARMS

- Detection of Input Loss
- Audio Alerts
- SNMP Compatible
- Email / SMS Alert in case of Input Loss detection

## FUNCTIONALITY

### RECORD

- Multi channel SD 24x7 recording of the Broadcast signal
- VLogger allows logging of 1 or 4 Composite video Inputs per server
- VLogger also support recording of DVBI-P MPTS / SPTS input for 8 channels per server.

\* The number of channels depends on the models selected

### MONITOR

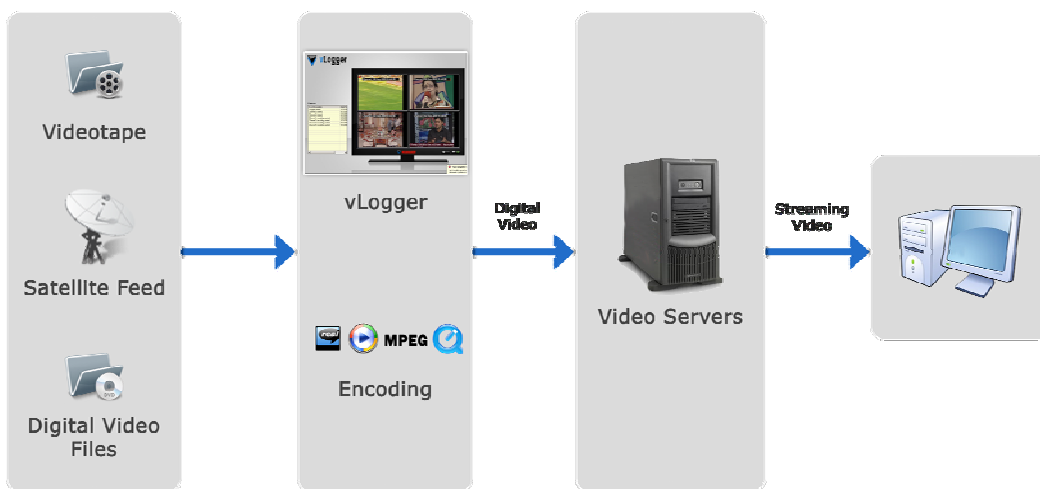
- View Live or Recorded content
- Monitor audio levels with VU Meters
- Stamping of channel name, time and date information on re-corded content

### VIEW

- Track content by clicking on easy to use interactive menu tabs.
- Dedicated application Interface to browse the recorded content
- Annotation Management

### MANAGE

- Burn to CD or DVD of the logged content



## TECHNICAL SPECIFICATION

### MODEL-1

- 1 RU Rack mount chassis
- Dual redundant power supply (Optional)
- Intel Quad Core high performance Processors
- Storage for 90 days of recording for 4 channel
- Windows 7

### MODEL-2

- Workstation chassis
- Intel i7 high performance Processors
- Storage for 90 days of recording for 4 channel
- Windows 7



**Rudraksha Technology Private Limited**

B-401, Sai Sangam, Sector-15, CBD Belapur, Navi Mumbai, India 400614

www.rtpl.co.in • Phone +91 22 6712 2797 • Fax +91 22 6712 2796

Support and Services • support@rtpl.co.in

Sales • sales@rtpl.co.in